



WWW.VIVI-REALESTATE.COM
WWW.VIVI-HOMES.COM



HUIS 6 KAMER 6.5 BADKAMERS IN BENAHAVÍS

📍 Benahavís

REF# V4782388 **2.900.000 €**

SLAAPK.	BADK.	BEBOUWD	PERCEEL	TERRAS
6	6.5	471 m ²	3250 m ²	160 m ²

Luxurious Sanctuary in Marbella

Nestled above our vibrant botanical gardens, the majestic Sierra de las Nieves mountains embrace our idyllic haven. This natural wonder shapes a unique microclimate in Marbella and Benahavís, offering over 320 sun-drenched days annually, making it one of Europe's sunniest destinations.

Exclusive Location

Marbella Club Hills, located in Benahavís, lies between the iconic Marbella Club Golf Resort and Anantara Villa Padierna Palace. Spanning an expansive 158,000 sqm, with only 5% dedicated to construction, this exclusive community preserves the pristine environment and offers residents breathtaking views.

Exquisite Villa

Bedrooms: 6

Bathrooms: 6.5



WWW.VIVI-REALESTATE.COM
WWW.VIVI-HOMES.COM

Built Area: 471 m²

Terrace: 160 m²

Garden/Plot: 3250 m²

This frontline golf villa is positioned close to golf courses and urban amenities, oriented to the south, and in excellent condition.

Luxury Features

Private pool

Air Conditioning (Hot/Cold)

Fireplace

Stunning Views: Mountain, Golf, Panoramic, Garden, Pool

Covered Terrace

Fitted Wardrobes

Private Terrace

Utility Room

Ensuite Bathrooms

Marble Flooring

Double Glazing

Fully Fitted Kitchen

Private Garden

24 Hour Security

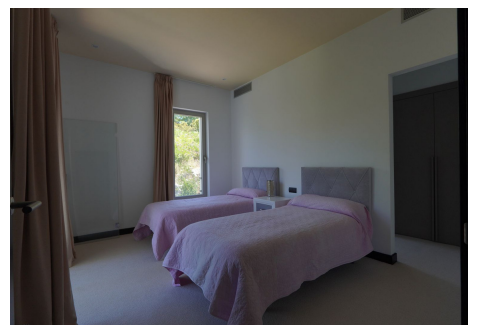
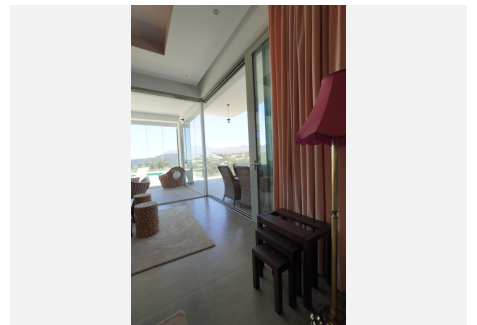
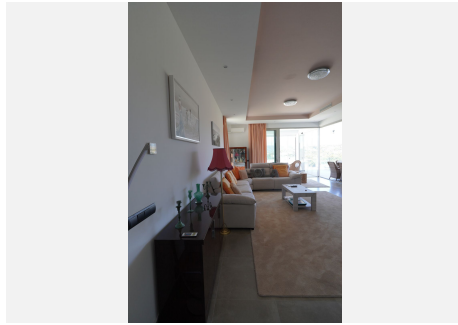
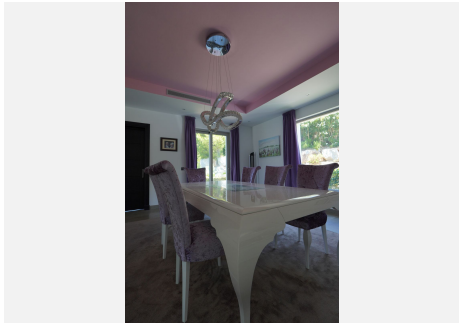
Private Garage

A short drive away from the vibrant Puerto Banús and Marbella, this property offers the perfect blend of luxury, comfort, and convenience.





WWW.VIVI-REALESTATE.COM
WWW.VIVI-HOMES.COM





WWW.VIVI-REALESTATE.COM
WWW.VIVI-HOMES.COM





WWW.VIVI-REALESTATE.COM
WWW.VIVI-HOMES.COM

