



WWW.VIVI-REALESTATE.COM
WWW.VIVI-HOMES.COM



HUIS 3 KAMER 3 BADKAMERS IN BENALMADENA

📍 Benalmadena

REF# V4365799 **1.495.000 €**

SLAAPK.	BADK.	BEBOUWD	PERCEEL	TERRAS
3	3	243 m ²	602 m ²	55 m ²

Well-Located and Stylish Villa with Sea View in Benalmadena

This exclusive villa is located in Benalmadena, a coastal town in the southern region of Andalusia, Costa del Sol. The villa is situated on a picturesque hilltop part of Benalmadena, offering breathtaking views of the Mediterranean Sea. It is considered among the best places to buy villa in Benalmadena. It is a cosmopolitan town that is known for its stunning beaches and numerous tourist attractions.

The villa has an excellent location close to all amenities. The villa is 1,9 km from the beach, 5,9 km from Torrequebrada golf course, 21 km from Malaga International Airport, and 38 km from Marbella.

To enjoy the outdoors, the villa has a private garden, that seamlessly blends with its surroundings and has a private pool. The idyllic location offers stunning sea views and tranquil living space close to all amenities.

The villa has an open-plan kitchen with well-equipped modern appliances and high-quality fixtures, a stylish and functional open-planned living and dining area, and 3 spacious bedrooms with en-suite bathrooms and large windows to enjoy amazing sea views. The open floor plan and strategically positioned floor-to-ceiling windows allow natural light to flood the space and take full advantage of the scenic vistas of the



WWW.VIVI-REALESTATE.COM
WWW.VIVI-HOMES.COM

Mediterranean Sea.

Interior

- Air Conditioning
- Balcony
- Blinds
- En-Suite Bathroom
- Laundry Room
- Open-Plan Kitchen
- Shower
- Storage Room
- Terrace
- White Goods

Exterior

- Car Park
- Private Garden
- Private Pool

Location

- Airport (0-50 Km)
- Beach (1-5 Km)
- Sea (1-5 Km)
- Sea View
- Mountain View

Heating

- Air Conditioning

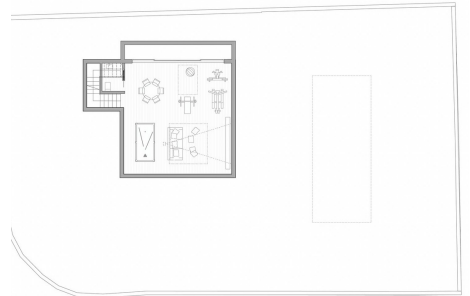
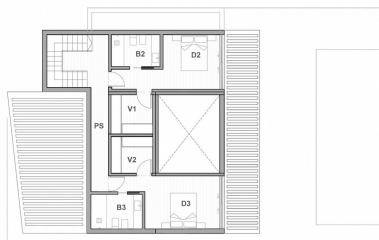
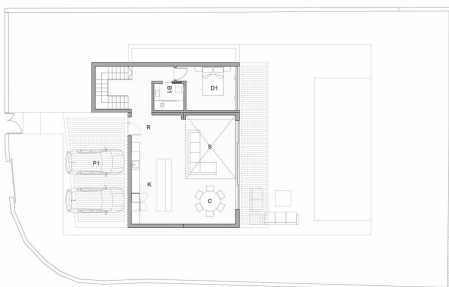




TABLA DE SUPERFICIES ÚTILES			TABLA DE SUPERFICIES ÚTILES			TABLA		
PLANTA P1			SOTANO			VIVIENDA PB		
						VIVIENDA P1		
v2	Dormitorio 2	14,52 m2	Sala de ocio	54,75 m2		SOTANO		
v2	Wc/Retor 1	4,87 m2	Aseo	2,8 m2		PORCHES		
v2	Baño 2	5,7 m2				TOTAL SUPERFICIES		
v2	Dormitorio 3	14,52 m2						
v2	Wc/Retor 2	4,89 m2						
v2	Baño 3	5,7 m2						
v2	Pasillo	8,87 m2						
v2	VIVIENDA P1	59,06 m2	SOTANO	57,55 m2				
v2								
v2								
v2								
						243,26 m2		