



WWW.VIVI-REALESTATE.COM  
WWW.VIVI-HOMES.COM



## HUIS 6 KAMER 6 BADKAMERS IN THE GOLDEN MILE

📍 The Golden Mile

REF# V4766305 **6.400.000 €**

SLAAPK.

6

BADK.

6

BEBOUWD

647 m<sup>2</sup>

PERCEEL

1441 m<sup>2</sup>

TERRAS

284 m<sup>2</sup>

Sophisticated independent villa located in a prestigious urbanization on the Golden Mile – Lomas de Marbella Club. It is one of the most popular luxury residential areas in Marbella, maintaining its elegant and original appearance, with large and perfect green areas, 24-hour security, quality of life and architecture. The urbanization is located 10 minutes from the center of Marbella, 40 km from Malaga.

International Airport, 50 km from the AVE station and 85 km from Gibraltar Airport.

Its location north of the Golden Mile, in front of Puente Romano and near the Royal Mosque with its impressive Andalusian Arab architecture, makes it a privileged area. On the other hand, the urbanization is close to a legendary 5\* hotel, Michelin-starred restaurants, numerous golf courses and international schools, Marbella and Puerto Banús. Wide variety of fashion boutiques, restaurants and nightlife.

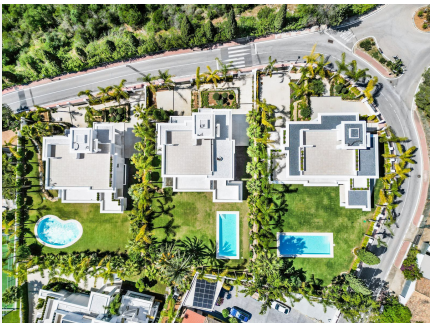


WWW.VIVI-REALESTATE.COM  
WWW.VIVI-HOMES.COM





WWW.VIVI-REALESTATE.COM  
WWW.VIVI-HOMES.COM



**DETACHED VILLAS**

**BASEMENT FLOOR**

NAME	BUILT
Garage	24,20 m <sup>2</sup>
Reception	3,00 m <sup>2</sup>
Bedroom 1	20,70 m <sup>2</sup>
Bedroom 2	27,20 m <sup>2</sup>
Bedroom 3	23,70 m <sup>2</sup>
Living	8,40 m <sup>2</sup>
Kitchen	22,00 m <sup>2</sup>
Washroom	2,00 m <sup>2</sup>
WC	2,00 m <sup>2</sup>
Storage Room	10,00 m <sup>2</sup>
Basement Floor	152,80 m <sup>2</sup>
<b>TOTAL HOUSE AREA</b>	<b>538,00 m<sup>2</sup></b>



**DETACHED VILLAS**

**FIRST FLOOR**

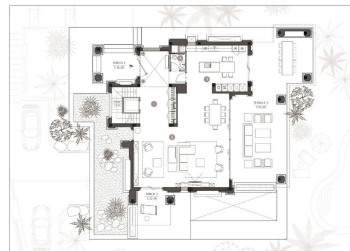
NAME	BUILT
Hallway	10,10 m <sup>2</sup>
Living 1	22,20 m <sup>2</sup>
Bedroom 1	14,00 m <sup>2</sup>
Bedroom 2	4,20 m <sup>2</sup>
Living - Reception	10,00 m <sup>2</sup>
Reception	10,00 m <sup>2</sup>
Kitchen	14,00 m <sup>2</sup>
Washroom	2,00 m <sup>2</sup>
WC	2,00 m <sup>2</sup>
Storage Room	10,00 m <sup>2</sup>
Basement Floor	152,80 m <sup>2</sup>
<b>TOTAL HOUSE AREA</b>	<b>538,00 m<sup>2</sup></b>



**DETACHED VILLAS**

**GROUND FLOOR**

NAME	BUILT
Hallway	10,10 m <sup>2</sup>
Living Room	22,20 m <sup>2</sup>
Reception	10,00 m <sup>2</sup>
WC	2,00 m <sup>2</sup>
<b>Basement Floor</b>	<b>152,80 m<sup>2</sup></b>
<b>TOTAL HOUSE AREA</b>	<b>538,00 m<sup>2</sup></b>



**DETACHED VILLAS**

**ROOF TERRACE**

NAME	BUILT
Roof	4,10 m <sup>2</sup>
Living	20,00 m <sup>2</sup>
WC	1,00 m <sup>2</sup>
<b>Basement Floor</b>	<b>152,80 m<sup>2</sup></b>
<b>TOTAL HOUSE AREA</b>	<b>538,00 m<sup>2</sup></b>

