



WWW.VIVI-REALESTATE.COM
WWW.VIVI-HOMES.COM



HUIS 5 KAMER 6 BADKAMERS IN THE GOLDEN MILE

📍 The Golden Mile

REF# V4785835 **5.450.000 €**

SLAAPK.

5

BADK.

6

BEBOUWD

360 m²

PERCEEL

501 m²

TERRAS

165 m²

Luxurious modern villa situated in the heart of the Golden Mile, 150 metres from the beach. With a plot of 501m², a total living area of 360 m², it includes 5 bedrooms and 5+1 bathrooms, a spacious living room, an open plan kitchen equipped with top quality appliances.

Features: Double sided gas fireplace, Floor to ceiling windows with access to the terrace, the pool and the garden. The basement area has a fully furnished living room and a bar area which could easily be used as a home cinema. A guest toilet, laundry and machine area.

The roof terrace is particularly impressive and features a jacuzzi, barbecue and bar area, fully furnished chill out corner enjoying views of La Concha mountain on one side or partial views of the Mediterranean on the other.

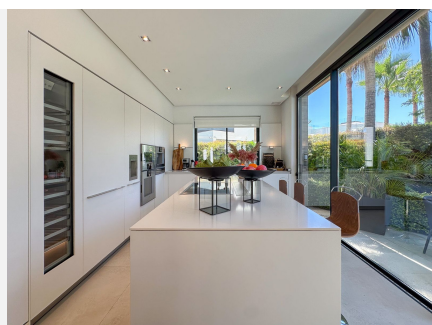
Built with the highest quality materials and equipped with the latest technology for a 21st century lifestyle. Home automation, TV and Bang Olufsen sound system throughout, full Bulthaup kitchen with the latest



WWW.VIVI-REALESTATE.COM
WWW.VIVI-HOMES.COM

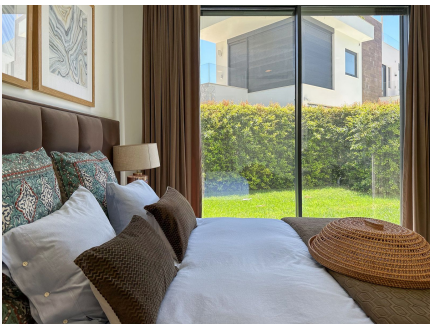
Gaggenau appliances, air conditioning, underfloor heating throughout, private swimming pool, rooftop Jacuzzi. Glass doors, floor to ceiling windows and glass balustrades maximise natural light and create a seamless effect between the indoor and outdoor spaces.

Situated on the most prestigious part of the beachside of Marbella's famous Golden Mile, this stunning brand new property has been built to an extremely high standard, with every detail carefully planned.





WWW.VIVI-REALESTATE.COM
WWW.VIVI-HOMES.COM





WWW.VIVI-REALESTATE.COM
WWW.VIVI-HOMES.COM





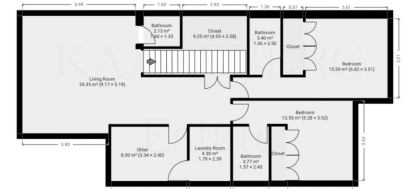
WWW.VIVI-REALESTATE.COM
WWW.VIVI-HOMES.COM



10/10 SCALE
ground floor



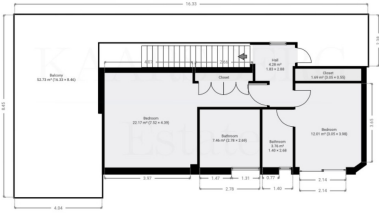
10/10 SCALE
Basement floor



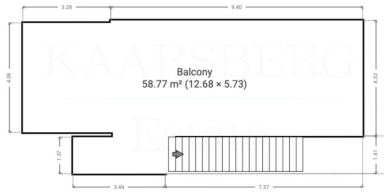


WWW.VIVI-REALESTATE.COM
WWW.VIVI-HOMES.COM

OT TO SCALE
1st floor



OT TO SCALE
2nd floor



OT TO SCALE
storage room

