



WWW.VIVI-REALESTATE.COM
WWW.VIVI-HOMES.COM



DOM W ZABUDOWIE BLIŹNIACZEJ 4 BEDROOMS 2 BATHROOMS IN BEL AIR

📍 Bel Air

REF# V4296241 **480.000 €**

BEDS

4

BATHS

2

BUILT

330 m²

TERRACE

266 m²

SPECTACULAR SEMI-DETACHED HOUSE IN THE HEART OF BEL-AIR IN A PRIVILEGED AND QUIET AREA.

Incredible property, spacious, well located and very independent, in a beautiful urbanization with communal pool and Andalusian style.

The property consists of an independent entrance leading to its very large terrace that surrounds the whole house, a covered porch that communicates with the living room with large windows that give light to every corner, the living room has a fireplace with fan that distributes hot air to the rooms on the upper floor. On the lower floor is the living room, the fully equipped kitchen made of wood and a complete bathroom.

On the first floor there are four bedrooms and a bathroom, another terrace that communicates with three of the rooms giving them light and clarity; a small spiral staircase leads to the solarium with 60 square meters with fantastic views of the sea and the mountains.

The property on the lower floor terrace has an access to a basement of 180 square meters, where there is



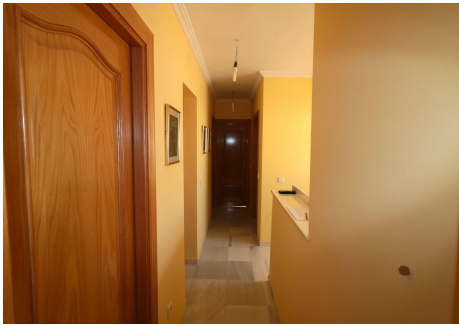
WWW.VIVI-REALESTATE.COM
WWW.VIVI-HOMES.COM

a small workshop and where one could make an entrance for private parking, a cinema room, a storage room or anything one could imagine, a space to develop any idea that arises, really an impressive place. Air conditioning, quality furniture, one exterior parking space and the possibility to make your own garage with direct access, communal swimming pool, high quality doors and windows. A unique opportunity to combine living and business or simply a new home for a family with plenty of space to enjoy.





WWW.VIVI-REALESTATE.COM
WWW.VIVI-HOMES.COM



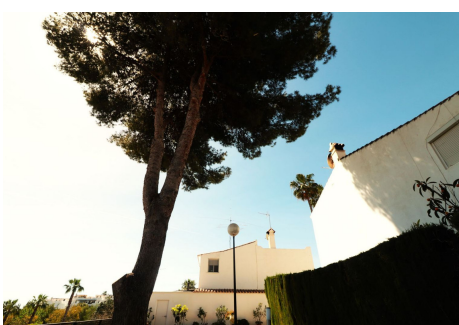
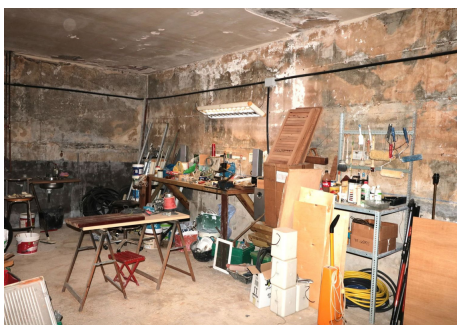
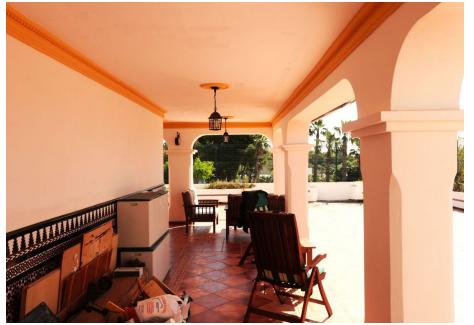


WWW.VIVI-REALESTATE.COM
WWW.VIVI-HOMES.COM





WWW.VIVI-REALESTATE.COM
WWW.VIVI-HOMES.COM





WWW.VIVI-REALESTATE.COM
WWW.VIVI-HOMES.COM

