



WWW.VIVI-REALESTATE.COM
WWW.VIVI-HOMES.COM



DOM 4 BEDROOMS 2 BATHROOMS IN BENALMADENA COSTA

📍 Benalmadena Costa

REF# V4620394 **890.000 €**

BEDS	BATHS	BUILT	PLOT	TERRACE
4	2	206 m ²	636 m ²	20 m ²

DETACHED HOUSE WITH A PLOT OF 636 M2 IN THE HEART OF BENALMÁDENA COSTA IN THE PLAZA SOLYMAR AREA LESS THAN 500 METERS FROM PUERTO MARINA. It is distributed on two floors:

The main floor is distributed with a large living room with a large window with direct access to the pool area. Fully furnished and equipped independent kitchen. 1 exterior double bedroom. 1 full bathroom with shower. Large entrance hall with storage areas.

On the second floor we find 3 large double bedrooms, the master bedroom with an en-suite bathroom and two of them with a terrace. 2 full bathrooms.

The land has large gardens and a swimming pool and a storage room.

The house also has an interior garage, low consumption electric heating and fireplace in the living room.

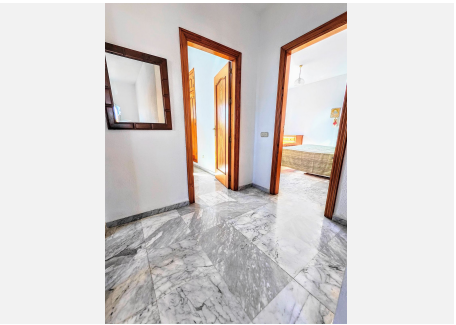
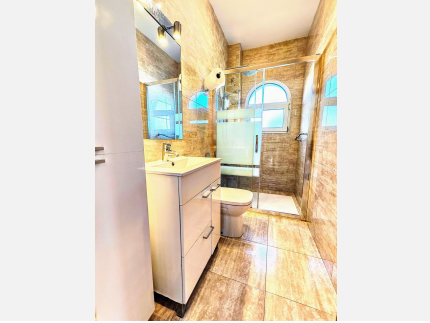


WWW.VIVI-REALESTATE.COM
WWW.VIVI-HOMES.COM





WWW.VIVI-REALESTATE.COM
WWW.VIVI-HOMES.COM





WWW.VIVI-REALESTATE.COM
WWW.VIVI-HOMES.COM

