



WWW.VIVI-REALESTATE.COM  
WWW.VIVI-HOMES.COM



## MIESZKANIE NA PARTERZE 3 BEDROOMS 2 BATHROOMS IN NEW GOLDEN MILE

📍 New Golden Mile

REF# V4657447 **1.550.000 €**

BEDS

3

BATHS

2

BUILT

127 m<sup>2</sup>

TERRACE

41 m<sup>2</sup>

Situated in Cabo Bermejo, an exclusive frontline beach development positioned along the New Golden Mile stretching between San Pedro and Estepona, this recently refurbished ground-floor apartment boasts three bedrooms and two bathrooms, providing a sophisticated living experience within a secure, prestigious gated community.

The community offers round-the-clock security and impeccably landscaped tropical gardens, complemented by two outdoor pools featuring cascading waterfalls and artificial lakes. Residents also have access to a well-equipped gym and relaxing sauna facilities. Just a stone's throw away lies the beachfront promenade, while upscale dining establishments and renowned 5-star hotels such as Las Dunas and Ikos Resorts are within easy walking distance.

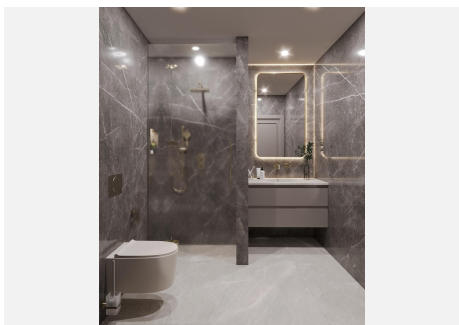
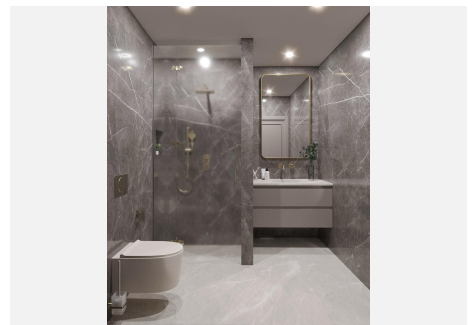
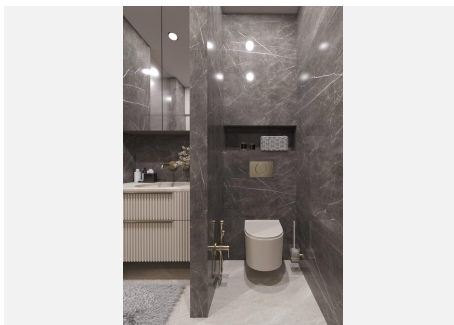
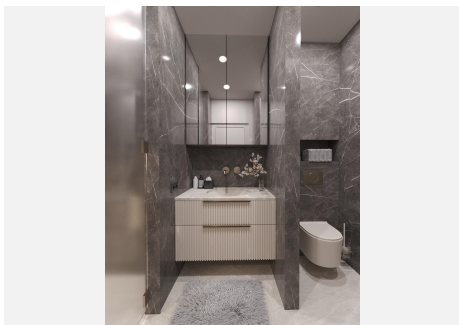
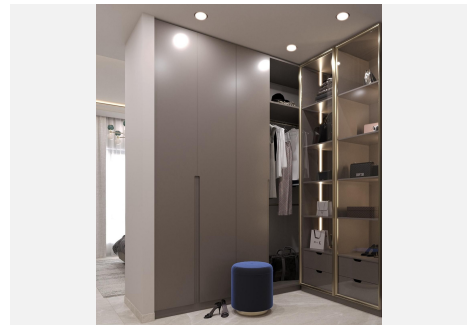
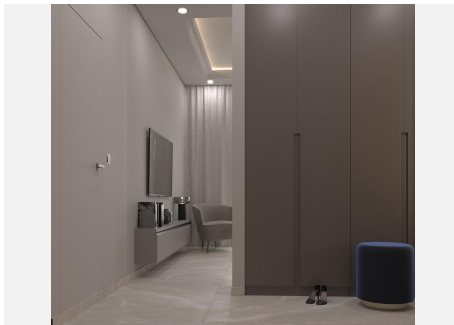
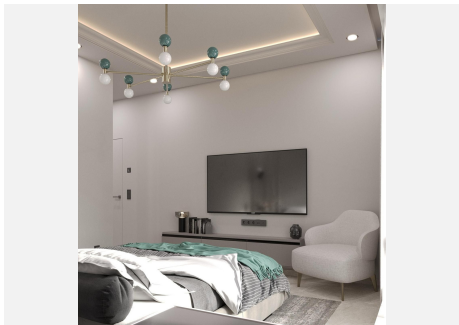
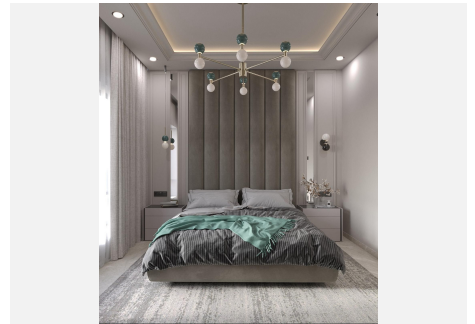
Inside, the apartment showcases a newly designed open-plan kitchen and living area, meticulously crafted



WWW.VIVI-REALESTATE.COM  
WWW.VIVI-HOMES.COM

with meticulous attention to detail. Expansive windows afford uninterrupted vistas of the azure Mediterranean Sea. The interior is further enhanced by luxurious amenities, added conveniences include underground parking and a storage unit.

The New Golden Mile, nestled between San Pedro and Estepona, epitomizes a blend of contemporary luxury and serenity. Renowned for its pristine beaches, championship golf courses, and an array of dining options, this locale offers a harmonious lifestyle. The recently constructed coastal pathway adds to its allure, while its strategic location grants effortless access to the vibrant marinas and nightlife scenes of Marbella and Puerto Banús.





WWW.VIVI-REALESTATE.COM  
WWW.VIVI-HOMES.COM

