



WWW.VIVI-REALESTATE.COM
WWW.VIVI-HOMES.COM



DOM W ZABUDOWIE BLIŹNIACZEJ 4 BEDROOMS 3 BATHROOMS IN BENALMADENA

📍 Benalmadena

REF# V4776175 **649.000 €**

BEDS	BATHS	BUILT	PLOT	TERRACE
4	3	300 m ²	50 m ²	50 m ²

Charming Semi-Detached House in Cortijo Torrequebrada, Benalmádena

Discover your personal oasis on Benalmádena's coveted Camelia Street, where charm and comfort merge in this captivating 4-bedroom home. This semi-detached house is perfectly situated just a 5-minute walk (400 meters) from the beach, offering an ideal blend of tranquility and convenience.

Property Details:

- Built Area: 300 m²
- Plot Size: 400 m²
- Bedrooms: 4 spacious bedrooms
- Bathrooms: 3 modern bathrooms
- Floors: 3



– Parking space included in the price

Features:

- Terrace and Balcony: Enjoy outdoor living with ample terrace and balcony space.
- Garden: Private garden area for residents, perfect for families and children.
- Air Conditioning: Stay cool and comfortable year-round.
- Swimming Pool: Take a refreshing dip in the private pool.
- Storage Room: Additional storage space for your convenience.
- Fitted Wardrobes: Built-in wardrobes in the bedrooms.

Recent Upgrades:

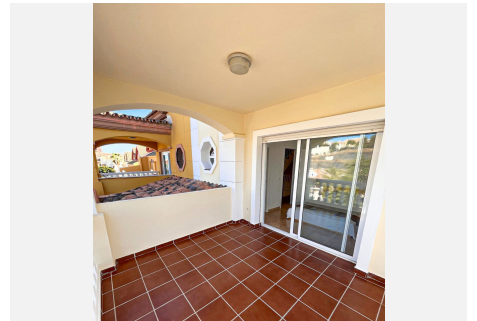
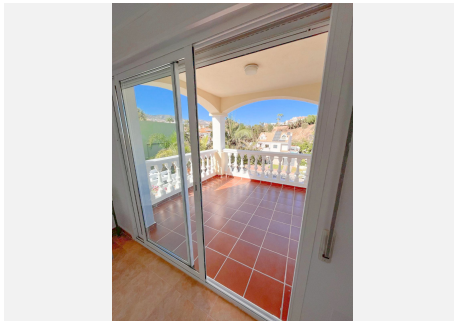
- Newly Painted: The entire house has been recently painted, giving it a fresh, modern look.
- Renovated Bathrooms: Enjoy updated, stylish bathrooms.

Prime Location:

- Beach Access: Only 400 meters from the beautiful Costa del Sol beach.
- Nearby Amenities: Within a 15-minute walk, you'll find essential services and leisure options.
- Transportation: Conveniently located half an hour from the airport and the high-speed train station.

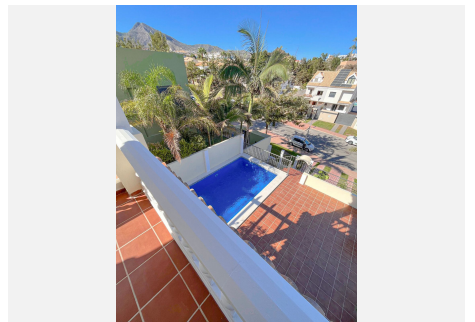
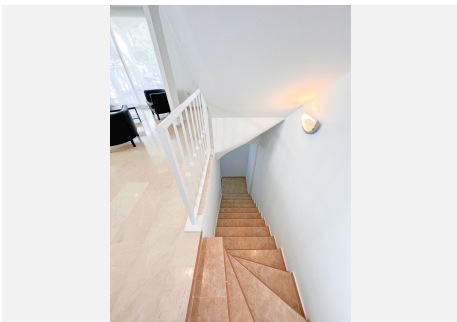
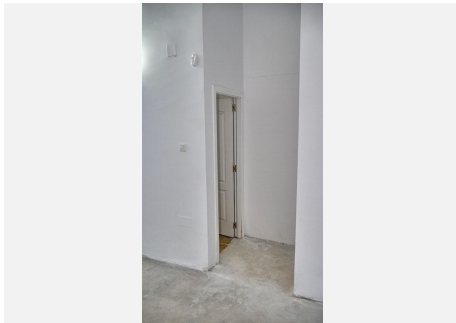
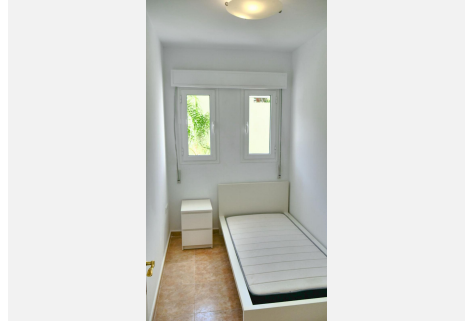
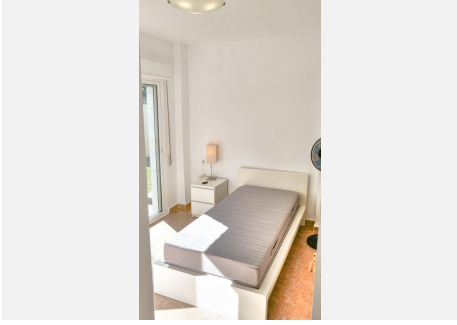
With its prime location, spacious design, and recent updates, this property offers an exceptional opportunity to enjoy the best of Benalmádena.

Contact us today for more information and to schedule a viewing.





WWW.VIVI-REALESTATE.COM
WWW.VIVI-HOMES.COM





WWW.VIVI-REALESTATE.COM
WWW.VIVI-HOMES.COM

