



WWW.VIVI-REALESTATE.COM
WWW.VIVI-HOMES.COM



HOUSE 4 BEDROOMS 3 BATHROOMS IN MANILVA

📍 Manilva

REF# V4423504 **1.150.000 €**

BEDS

4

BATHS

3

BUILT

212 m²

PLOT

1101 m²

TERRACE

261 m²

Exquisite 4-Bedroom Villa with Breathtaking Panoramic Sea Views in La Paloma, Manilva

This remarkable villa offers a luxurious living experience, showcasing unparalleled panoramic sea views in the coveted La Paloma neighborhood of Manilva.

Upon entering, you are greeted by a spacious open-plan kitchen, thoughtfully equipped, and featuring access to a covered terrace adorned with stunning sea views and even a pizza oven. The main living room, also graced with captivating sea views, offers access to another covered terrace, which is shared with an en-suite bedroom. Two additional well-appointed bedrooms and a shared bathroom are also conveniently located on this level.



Descend to the lower ground floor, and you'll discover the grand master bedroom, complete with an en-suite bathroom and direct access to the pool area, where a sprawling 72m2 pool invites relaxation. An independent gym adds to the allure of this level.

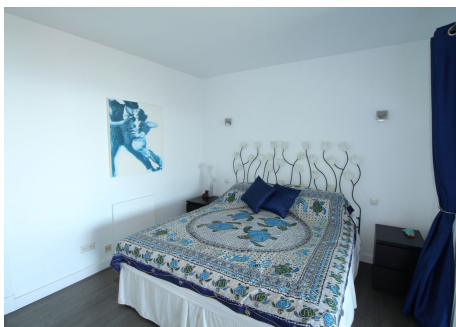
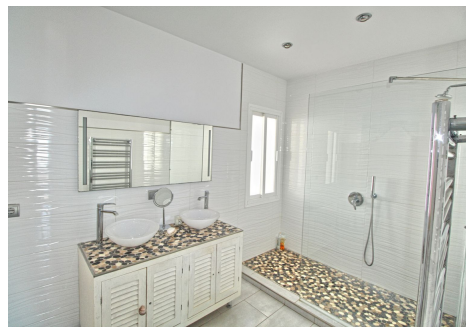
Ascend to the top floor, where an office room awaits, boasting a charming terrace that affords remarkable views of the mountains, countryside, and sea.

This classical villa boasts a modernized interior and a plethora of outdoor terrace spaces, each offering captivating views of the surrounding countryside, sea, and mountains.

Completing the package, you'll find a private parking space within the plot for your convenience.

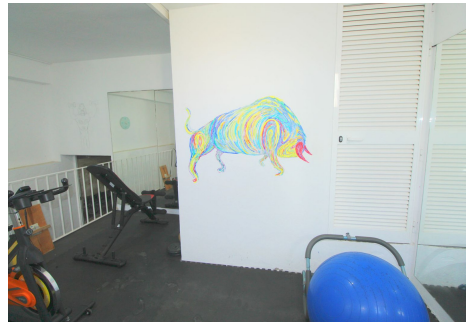
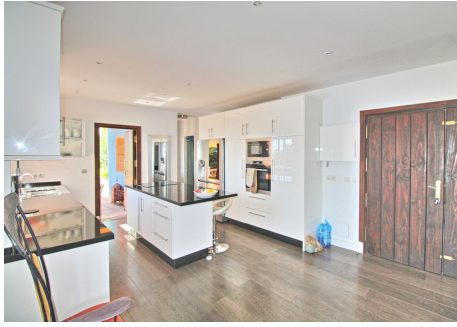
Nestled in the spectacular La Paloma locale, this villa is within walking distance of the beach and the renowned Chiringuito Tubalitas. It also enjoys proximity to numerous picturesque beaches, as well as the vibrant towns of Sotogrande and Estepona.

Discover unparalleled luxury living in this exquisite La Paloma villa.





WWW.VIVI-REALESTATE.COM
WWW.VIVI-HOMES.COM





WWW.VIVI-REALESTATE.COM
WWW.VIVI-HOMES.COM

