



WWW.VIVI-REALESTATE.COM  
WWW.VIVI-HOMES.COM



## HOUSE 5 BEDROOMS 6 BATHROOMS IN THE GOLDEN MILE

📍 The Golden Mile

REF# V4785835 **5.450.000 €**

BEDS

5

BATHS

6

BUILT

360 m<sup>2</sup>

PLOT

501 m<sup>2</sup>

TERRACE

165 m<sup>2</sup>

Luxurious modern villa situated in the heart of the Golden Mile, 150 metres from the beach. With a plot of 501m<sup>2</sup>, a total living area of 360 m<sup>2</sup>, it includes 5 bedrooms and 5+1 bathrooms, a spacious living room, an open plan kitchen equipped with top quality appliances.

Features: Double sided gas fireplace, Floor to ceiling windows with access to the terrace, the pool and the garden. The basement area has a fully furnished living room and a bar area which could easily be used as a home cinema. A guest toilet, laundry and machine area.

The roof terrace is particularly impressive and features a jacuzzi, barbecue and bar area, fully furnished chill out corner enjoying views of La Concha mountain on one side or partial views of the Mediterranean on the other.



WWW.VIVI-REALESTATE.COM  
WWW.VIVI-HOMES.COM

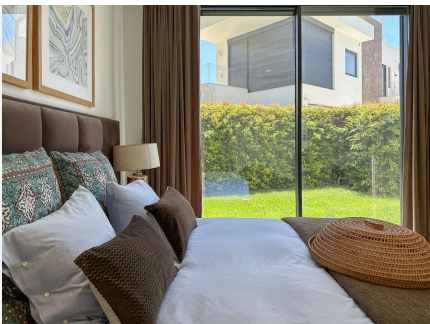
Built with the highest quality materials and equipped with the latest technology for a 21st century lifestyle. Home automation, TV and Bang Olufsen sound system throughout, full Bulthaup kitchen with the latest Gaggenau appliances, air conditioning, underfloor heating throughout, private swimming pool, rooftop Jacuzzi. Glass doors, floor to ceiling windows and glass balustrades maximise natural light and create a seamless effect between the indoor and outdoor spaces.

Situated on the most prestigious part of the beachside of Marbella's famous Golden Mile, this stunning brand new property has been built to an extremely high standard, with every detail carefully planned.





WWW.VIVI-REALESTATE.COM  
WWW.VIVI-HOMES.COM





WWW.VIVI-REALESTATE.COM  
WWW.VIVI-HOMES.COM

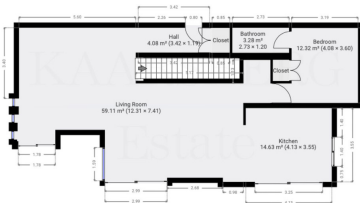




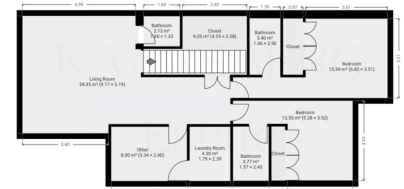
WWW.VIVI-REALESTATE.COM  
WWW.VIVI-HOMES.COM



10/10 SCALE  
ground floor

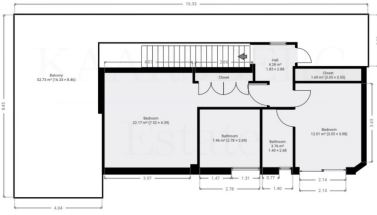


10/10 SCALE  
Basement floor

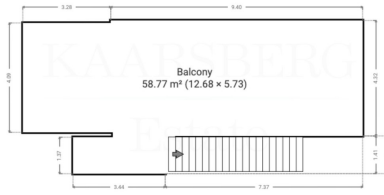




OT TO SCALE  
1st floor



OT TO SCALE  
2nd floor



OT TO SCALE  
storage room

